

FITTING NEW SEATS

If you're bored with your standard seats, change them to these swanky John Cooper Works ones

Words and Pics: Rob Hawkins

With an assortment of aftermarket and optional extra seats from the likes of Cooper and Cobra, the work required to remove the original seats and fit the new ones is relatively straightforward. Before you buy, however, find out if the new seat is fitted with an airbag. If it isn't, ask the manufacture for help with switching off the airbag connection for the seat. If this isn't switched off, a warning light will appear. You may need to visit your BMW dealer and have it switched off.

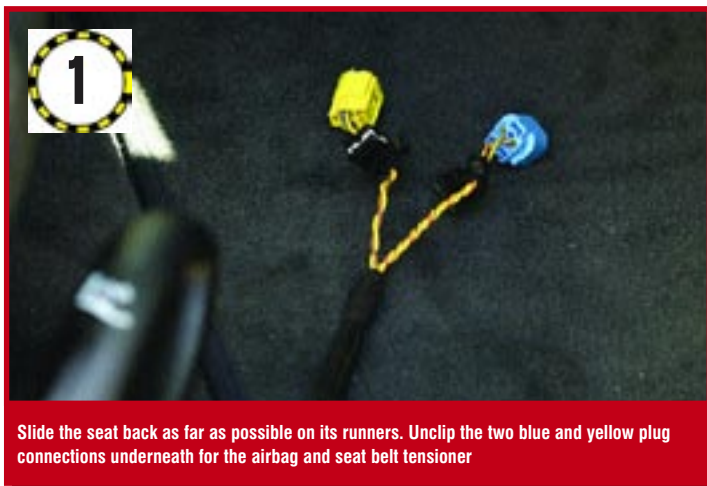
When changing the seats, make sure the ignition is switched off to avoid activating any warning lights. Most aftermarket seats



will use the original runners and linkage, so the following steps show how to remove this. Refitting the runners is a fiddly job, so enlist an extra pair of hands to help. Some seats require a subframe to be fitted prior to fitting the

original runners.

Set aside 2-3 hours to change a pair of seats. Special tools include a couple of Torx bits (T30 and T45). Thanks to Cool New (01708 738855) for help and advice.



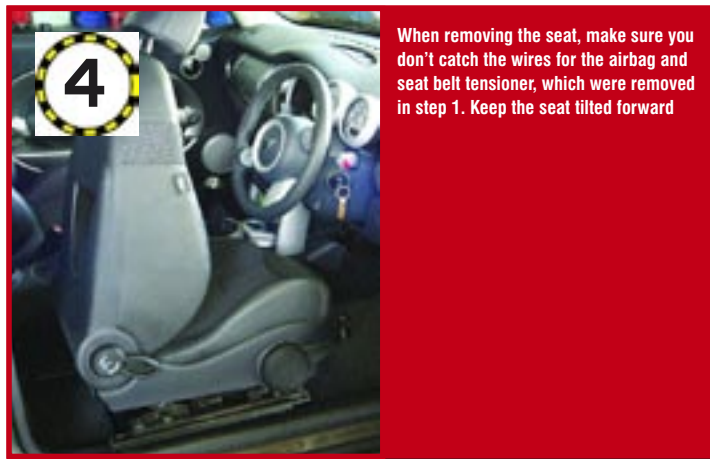
1 Slide the seat back as far as possible on its runners. Unclip the two blue and yellow plug connections underneath for the airbag and seat belt tensioner



2 The seat is bolted in four places to the floor of the Mini. Look for a Torx T30 bolt at the front of each runner and undo it (two bolts in total)



3 Slide the seat forward on its runners, then tilt it forwards. Undo the two Torx T30 bolts at the rear of the runners. The seat can now be removed



4 When removing the seat, make sure you don't catch the wires for the airbag and seat belt tensioner, which were removed in step 1. Keep the seat tilted forward

NEWMINI HOW TO



5

With the seat removed, raise it to the highest position using the higher/lower lever at the front right of the driver's seat or the front left of the passenger's seat



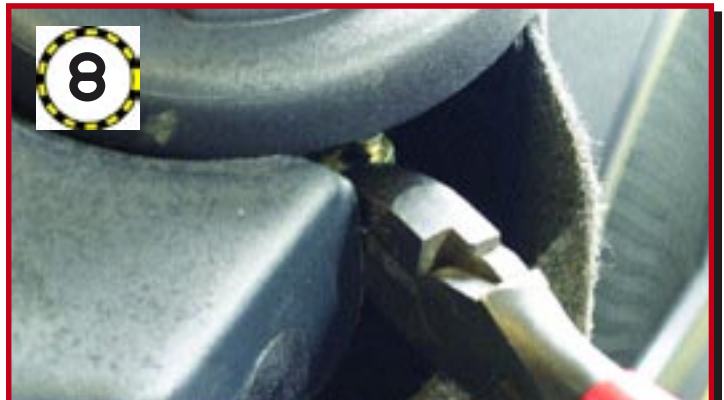
6

Start to remove the runners by undoing two Torx T30 bolts at the front of each one. There's not much room, so use the Torx bit and mole grips if the socket doesn't fit



7

There's more space to undo the rear Torx T30 bolts for the runners. Undo two on the rear of each runner. The two runners and linkage can then be removed



8

One wire will remain connected between the runner and seat. It allows the seat to be tilted. Use pliers to unhook it from the seat, leaving it attached to the runners



9

Remove the seat belt unit and the seat belt tensioner by undoing one Torx T45 bolt. These items cannot be removed until the next two steps are completed



10

A wire from the tensioner to the plug, which was disconnected in step 1, is secured to the seat with two plastic ties. Cut these two ties



11

To finally remove the seat belt unit and tensioner, feed the wire and connector for the tensioner through the seat frame



12

Take the new seat and fit the original runners and linkage. You may need some help to position the runners, then bolt them in place. The new seat may use a subframe that needs fitting first



13
Take the wire for the tilt connection, which was removed in step 8, and feed it through to where it should be fitted. Use a pair of pliers to hook it into position



14
Refit the seat belt unit and tensioner, which was removed in step 9. Fully tighten the Torx T45 bolt. Make sure the wire for the tensioner is not trapped



15
Feed the wire for the seat belt tensioner under the seat and clip the connecting plug in place. Use plastic ties to secure the wire and make sure it doesn't obstruct the runners



16
To fit the new seat into the car, move it fully forward on its runners and tilt it forward if necessary. Lower it gently into the car. Make sure the runners don't catch the paintwork



17
Tilt the seat forwards and locate the Torx T30 bolts to mount the rear of the runners. Check no additional carpet gets trapped. Don't fully tighten the bolts



18
Slide the seat fully back, then fit the front Torx T30 bolts for the runners. The runners and seat may need to be moved to locate the bolts, so make sure the rear bolts are loose



19
When you've fitted all four Torx bolts for the runners, use a torque wrench to fully tighten them to 35Nm



20
Reconnect the airbag (if fitted to the new seat) and seatbelt tensioner wires. Switch on the ignition and check that no warning lights appear